

Preferred Gas Plumbing & Pool Heating Supplies

Pool & Spa Gas Heaters Catalogue

2011

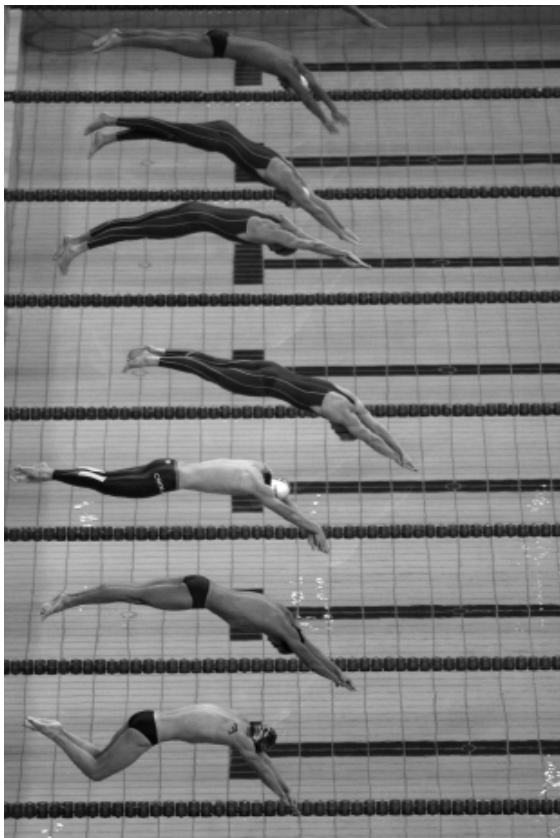
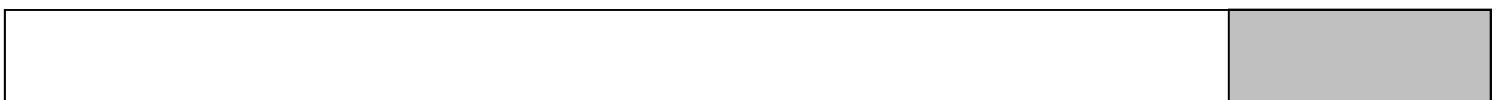


Table of Contents

Table of contents	Page 1
Residential Pool Equipment	Page 2
AstralPool HX & WX Pool & Spa Gas Heaters	Page 3
AstralPool JX & AstralPool MX Domestic & Commercial Pool & Spa Gas Heaters	Page 4
Viron Pool & Spa Gas Heaters	Page 5
AstralPool Indoor & Outdoor HR Commercial Pool & Spa Gas Heaters	Page 6
AstralPool & DX Heat & Cool Heat Pumps	Page 7
Raypak Premium Pool & Spa Gas Heaters	Page 8
Raypak Domestic Pool & Spa Gas Heaters	Page 9
Raypak Domestic Pool & Spa Gas Heaters	Page 10
Raypak Pool & Spa Gas Heaters Accessories	Page 11
Raypak Pool & Spa Gas Heaters Accessories	Page 12
Raypak Pool & Spa Gas Heaters Accessories Price List	Page 13
Contact Details	Page 14



Residential Pool Equipment

Save space and installation time.

In today's smaller backyards, space is at a premium. Viron's unique technology means the heater is only 30% - 50% of the size of conventional gas heaters. Smaller footprint, lower clearances from nearby structures, and a lower height enable Viron to be installed in places heaters could never before it.

Heating on demand

Heat only when you swim and swim only when you want. At AstralPool Hurlcon we believe your pool or spa should be a warm oasis, whenever you want to use it. But why waste energy and money to keep it warm just in case you are going to use it.

Many pools and spas heating systems need to be left operating continuously simply because they take days to heat up. Only gas heating provides realistic heating on demand.

Whether your pool is in a warm sub tropical climate or a cool temperate climate only gas can realistically heat your pool in a few hours. Once the weekend or holidays are finished, simply turn your heater off and save money. In fact, the most economical way to heat you pool has always been natural gas heating on demand. And Viron saves approximately 20% on operating costs over conventional gas heaters. On fact, when used to heat on demand, a Natural Gas Viron heater can save up to \$780.00 per annum over a Heat Pump.

Installation

The Viron Pool and Spa Heater makes installation easier than ever. Clearances to walls and structures can be reduced by up to 450mm with the Viron, substantially reducing the floor area required. Water connections are made with glue in 50mm PVC pipe, no bi pass valves are required for flow rates up to 500 litres per minute.

With 4 models available, the Viron Pool and Spa Heater enables you to heat your pool or spa on demand, when you want to swim, saving you money, and helping preserve the environment in which we live. Only Viron gives you so much in such a small package.

Warranty

Viron is covered by a 5 year warranty on the cabinet, 2 years on the gas valve, circuit boards and burner as well as 1 year on the heat exchanger. Refer to product instructions at www.astralpool.com.au for full warranty details.



HX Pool and Spa Gas Heaters



Description: Pool & Spa gas heater incorporating Cupro Nickel Heat Exchanger, Gunus IV LCD digital thermostat, thermoplastic inlet/outlet headers, external gas connection, 45 degree high limit protection, electronic ignition system, Powder coated enamel inside and out. Powder coated fuel terminal.

Options: Indoor or Outdoor; LP Gas or Natural Gas and Remote Thermostat.

Ordering: Please specify product number; indoor or outdoor, LPG or Natural Gas.

Warranty Guide: Limited five (5) year warranty on parts and 12 months on in field labour.

Model Number:	Description:	Product Code:	M/J Input:	Retail Price:
HX70	Cupro Nickel Gas Heater	10971	72	\$TBA
HX120	Cupro Nickel Gas Heater	10972	114	\$TBA

WX Pool and Spa Gas Heaters



Description: Pool & Spa gas heater incorporating Cupro Nickel Heat Exchanger. Designed for use with Portable spas. Waterflow to be between 60 lpm and 150 lpm per minute.

Options: Indoor or Outdoor, LP Gas or Natural Gas, Remote Thermostat.

Ordering: Please specify product number, indoor or outdoor, LPG or Natural Gas.

Warranty Guide: Limited five (5) year warranty on parts, 12 months on in field labour.

Model Number:	Description:	Product Code:	M/J Input:	Retail Price:
WX75	Cupro Nickel Gas Heater	10946	72	\$TBA
WX120	Cupro Nickel Gas Heater	10947	114	\$TBA

--	--

JX Pool and Spa Gas Heaters



Description: Fan forced Pool & Spa Heater for wall mounting. Incorporates Cupro Nickel Heat Exchanger, Gunus IV LCD digital thermostat, 40mm thermoplastic inlet/outlet water connections. In built 45 degree high limit protection to comply with Australian Standards, electronic ignition system. Powder coated enamel inside and out, stainless steel flue terminal. Indoor model room sealed so that no additional ventilation to atmosphere is required. All connections underneath heater. Ideal for courtyards or confined spaces. Forced draft combustion system means lower clearances from windows and surrounding objects.

Options: Indoor or Outdoor, LP Gas or Natural Gas, Remote Thermostat.

Ordering: Please specify product number, indoor or outdoor, LPG or Natural Gas.

Warranty Guide: Limited five (5) year warranty on parts, 12 months on in field labour.

Model Number:	Description:	Product Code:	M/J Input:	Retail Price:
JX130 Outdoor	Outdoor Gas Heater	10960	120	\$TBA
JX160 Outdoor	Outdoor Gas Heater	10961	155	\$TBA
JX130 Indoor	Indoor Gas Heater	10958	121	\$TBA
JX160 Indoor	Indoor Gas Heater	10959	155	\$TBA

MX Domestic Pool and Spa Gas Heaters



Description: Flagship swimming pool and spa gas heater incorporating Cupro Nickel Heat Exchanger, Gunus IV LCD digital thermostat.

Options: Indoor or Outdoor, LP Gas or Natural Gas, Remote Thermostat, Standard or Bronze water connections.

Ordering: Please specify product number, indoor or outdoor, LPG or Natural Gas.

Warranty Guide: Limited five (5) year warranty on parts, 12 months on in field labour.

Model Number:	Description:	Product Code:	M/J Input:	kW Output:	Retail Price:
MX150	Domestic Gas Heater	10949	160	35	\$TBA
MX250	Domestic Gas Heater	10975	240	60	\$TBA
MX300	Domestic Gas Heater	10976	295	68	\$TBA
MX400	Domestic Gas Heater	10977	380	88	\$TBA

--	--

Viron series Gas Heaters



Description: High Efficiency Condensing Pool Heater with Premixed combustion. Ultra compact with high output provides rapid on demand heating of all size domestic pools. Modulating burner maintains water temperature at the precise set point and achieves up to 97% efficiency. The Viron heater reduces gas consumption by up to 20% over conventional pool heaters, emitting significantly less greenhouse gasses. Condensate generated has a pH of 6.8 and can be plumbed into pool to add water and reduce pH of swimming pool.

Options: Indoor or Outdoor, LP Gas or Natural Gas, Remote Thermostat.

Ordering: Please specify product number, indoor or outdoor, LPG or Natural Gas.

Warranty Guide: Limited five (5) year warranty on parts, 12 months on in field labour

Model Number	Description	Product Code	M/J Input	kW Output	Retail Price
Viron 250	Gas Heater	15125	195	60	\$TBA
Viron 350	Gas Heater	15126	295	78	\$TBA
Viron 450	Gas Heater	15127	395	100	\$TBA
Viron 550	Gas Heater	15128	495	115	\$TBA

--	--

HR Commercial Pool and Spa Gas Heaters



Description: Commercial Pool Heater, Natural Gas or LP Gas, balanced flue for outdoor or inbuilt installation or inbuilt draft diverter when installed indoors, Bronze Headers, large 22.25mm internal diameter finned copper tube head exchanger, Genus IV Thermostat, G4 compliant, high efficiency, marine grade, powdercoated cabinet inside and out, “Superwool” refractory insulation for low residential heat.

Options: Indoor or Outdoor, LP Gas or Natural Gas, Remote Thermostat, Left or right hand water connections.

Ordering: Please specify product number, indoor or outdoor, LPG or Natural Gas. Allow 25 days for manufacturing. Onsite commissioning available—POA.

Warranty Guide: Limited five (5) year warranty on parts, 12 months on in field labour.

HR Commercial Indoor Pool and Spa Gas Heaters

Model Number:	Description:	Product Code:	M/J Input:	kW Output:	Retail Price:
HR600	Indoor Gas Heater	10709	595	136	\$TBA
HR800	Indoor Gas Heater	10719	790	180	\$TBA
HR1000	Indoor Gas Heater	10729	990	225	\$TBA
HR1200	Indoor Gas Heater	10739	1190	270	\$TBA
HR1400	Indoor Gas Heater	10749	1390	316	\$TBA
HR1600	Indoor Gas Heater	10759	1585	361	\$TBA
HR1800	Indoor Gas Heater	10769	1785	406	\$TBA

HR Commercial Outdoor Pool and Spa Gas Heaters

Model Number:	Description:	Product Code:	M/J Input:	kW Output:	Retail Price:
HR600	Outdoor Gas Heater	10708	595	136	\$TBA
HR800	Outdoor Gas Heater	10718	790	180	\$TBA
HR1000	Outdoor Gas Heater	10728	990	225	\$TBA
HR1200	Outdoor Gas Heater	10738	1190	270	\$TBA
HR1400	Outdoor Gas Heater	10748	1390	316	\$TBA
HR1600	Outdoor Gas Heater	10758	1585	361	\$TBA
HR1800	Outdoor Gas Heater	10768	1785	406	\$TBA

--	--

DX Heat & Cool Heat Pumps



Description: Heat Pump Suitable for Residential Pools & Spas incorporating Scroll Complaint Compressor, Corrosion resistant Polyethylene base and fan cowl. Cupro Nickel Heat Exchanger, Genus IV LCD digital thermostat and quiet moulded fan.

Ordering: Please specify product number when ordering.

Warranty Guide: 5 years Pro Rata Warranty.

Model Number	Description	Product Code	Kw Input	Heating Output	Cooling Output	Voltage	Retail Price
DX121 – 1Ph	Heat & Cool Heat Pump	11053	5.0/4.3*	26/19*	15/11*	240/50hz	\$TBA
DX121 – 3Ph	Heat & Cool Heat Pump	11051	5.0/4.3*	26/19*	15/11*	415/50hz	\$TBA

AstralPool Heat Pumps



Description: Heat Pump Suitable for Residential Pools & Spas in sizes ranging from 3hp with a side discharge fan to 6 hp with a top discharge fan. Titanium heat exchanger, powder coated case, 40mm union inlet and outlet connections. Flow rate from 100 lpm to 250 lpm. Incorporates high and low gas pressure switch, electronic thermostat.

Ordering: Take note of fan discharge outlet, specify 240V single phase or 415V three phase power supply.

Warranty Guide: 10 years on Heat Exchanger, 3 years on compressor and evaporator. 1 year on control.

Model Number	Description	Product Code	Discharge Output	Heating Output	HP	Voltage	Retail Price
B600	Pool & Spa Heat Pump – 1Ph	78229	Side	14/10	3 HP	240/50hz	\$TBA
SBM 700	Pool & Spa Heat Pump – 1Ph	78230	Top	19/14	4 HP	240/50hz	\$TBA
SBT 700	Pool & Spa Heat Pump – 3Ph	78231	Top	19/14	4 HP	415//50hz	\$TBA
SBM 800	Pool & Spa Heat Pump – 1Ph	78232	Top	25/18	5 HP	240/50hz	\$TBA
SBM 800	Pool & Spa Heat Pump – 3Ph	78233	Top	25/18	5 HP	415/50hz	\$TBA
SBT 900	Pool & Spa Heat Pump – 3Ph	78234	Top	30/22	6 HP	415/50hz	\$TBA

--	--

Premium Pool and Spa Gas Heaters



Description: All bronze headers for even greater temperature and wear tolerance with increased corrosion protection, Stainless steel constructed base, Stainless steel combustion support structure, Powder coated ZAM heavy gauge metal casing to withstand.

Options: Indoor or Outdoor, LP Gas or Natural Gas, Bronze water connections.

Ordering: Please specify product number and LPG or Natural Gas.

Warranty Guide: Limited three (3) year warranty on parts, 12 months on in field labour.

Please note: Above heater prices are outdoor only—indoor heaters require indoor hood kits—see accessories price list.

Prices are subject to change without notice.

Freight is inclusive from Melbourne to our warehouse at Burleigh Heads.

The above prices are pickup from our warehouse.

Delivery to site can be arranged, price on application.

Model Number	Product Code	Nominal Rating	M/J Input:	kW Output:	R.R.P.	
					Ex. GST	Inc.GST
127 PREMIUM	PO127NNO/OD	Natural Gas	110 MJ/hr	25 KW	\$TBA	\$TBA
	PO127PNO/OD	Propane	103 MJ/hr	23 KW		
167 PREMIUM	PO167NNO/OD	Natural Gas	164 MJ/hr	36 KW	\$TBA	\$TBA
	PO167PNO/OD	Propane	154 MJ/hr	34 KW		
280 PREMIUM	PC0280-N	Natural Gas	278 MJ/hr	62 KW	\$TBA	\$TBA
	PC0280-P	Propane	261 MJ/hr	58 KW		
430 PREMIUM	PC0430-N	Natural Gas	420 MJ/hr	94 KW	\$TBA	\$TBA
	PC0430-P	Propane	396 MJ/hr	88 KW		

--	--

Domestic Pool and Spa Gas Heaters



Description: Digital heater controller, cupro-nickel heat exchanger, EIB for control of landscaping features such as garden lights, pool lights and water features, energy saving “hot surface ignition”, Polymer headers for longer life, outdoor use only.

Options: LP Gas or Natural Gas, Bronze water connections. remote control available.

Ordering: Please specify product number and LPG or Natural Gas.

Warranty Guide: Limited three (3) year warranty on parts, 12 months on in field labour.

Please note: Above heater prices are outdoor only—indoor heaters require indoor hood kits—see accessories price list.

Prices are subject to change without notice.

Freight is inclusive from Melbourne to our warehouse at Burleigh Heads.

The above prices are pickup from our warehouse.

Delivery to site can be arranged, price on application.

Domestic Pool and Spa Gas Heaters

Model Number	Product Code	Nominal Rating	M/J Input:	kW Output:	R.R.P.	
					Ex. GST	Inc.GST
200 RESIDENTIAL	PO200-N	Natural Gas	164 MJ/hr	36 KW	\$TBA	\$TBA
	PO200-P	Propane	154 MJ/hr	34 KW		
280 RESIDENTIAL	PC0280-N	Natural Gas	278 MJ/hr	62 KW	\$TBA	\$TBA
	PC0280-P	Propane	261 MJ/hr	58 KW		
350 RESIDENTIAL	PC0430-N	Natural Gas	420 MJ/hr	94 KW	\$TBA	\$TBA
	PC0430-P	Propane	396 MJ/hr	88 KW		
430 RESIDENTIAL	PC0430-N	Natural Gas	430 MJ/hr	94 KW	\$TBA	\$TBA
	PC0430-P	Propane	396 MJ/hr	88 KW		

--	--

Domestic Pool and Spa Gas Heaters



Description: Digital thermostat display, integration capabilities with EIB, energy saving “hot surface ignition”, Polymer headers for longer life, outdoor use only, child lock function.

Options: Indoor or Outdoor, LP Gas or Natural Gas, Bronze water connections, remote control available.

Ordering: Please specify product number and LPG or Natural Gas.

Warranty Guide: Limited three (3) year warranty on parts, 12 months on in field labour.

Please note: Above heater prices are outdoor only—indoor heaters require indoor hood kits—see accessories price list.

Prices are subject to change without notice.

Freight is inclusive from Melbourne to our warehouse at Burleigh Heads.

The above prices are pickup from our warehouse.

Delivery to site can be arranged, price on application.

Spartan 131 Pool and Spa Gas Heater

Model Number	Product Code	Nominal Rating	M/J Input:	kW Output:	R.R.P.	
					Ex. GST	Inc.GST
131 SPARTAN	PO131NCO/OD	Natural Gas	120 MJ/hr	24 KW	\$TBA	\$TBA
	PO131PCO/OD	Propane	120 MJ/hr	24 KW		



Raypak Pool and Spa Gas Heaters Accessories

Remote Controller



The Raypak pool and spa heater remote controller can be either surface or flush mounted, indoor or outdoors. By installing the remote control inside your house you do not have to go outside to operate your heater or check the water temperature. Easy to use push button controls make adjustment of temperature simple and allows for separate temperature settings for your pool and spa. In

addition, the remote is capable of communication with the Raypak Equipment Interface Box for control of other pool, spa, or landscaping equipment, such as pool or garden lights and water features.

Equipment Interface Box (EIB)



The Raypak EIB is an electrical connection centre that enables auxiliary landscaping equipment such as pool lights, garden lights, water features, etc. to be controlled via the heater controller or Raypak Remote. Auxiliary equipment does not need to be associated with the pool or spa and so the connection capabilities are enormous. Equipment connected to the EIB can either be programmed to operate automatically or manually via the Raypak heater or Remote controller.

Flow Switch Kits



A Raypak flow switch is required when the location of the heater is either 1.0-meter higher or lower than the pool water surface. The pressure switch supplied with the pool heater may not operate correctly under these conditions. The flow switch is also an ideal secondary safety system that can be installed to protect your pool heater.

Raypak Pool and Spa Gas Heaters Accessories

Dilution Fans



Dilution Fans (also referred to as Power Flues) are sometimes required for indoor or outdoor installations where there is no natural way of controlling venting of flue gas to a safe location or where there are high wind speeds or highly variable air pressures. The Raypak dilution fan can provide an option when the normal flueing of the heater is not achievable or may be visually obtrusive. The standard 6mVA fan is suitable for use with the standard domestic and premium range pool heater. Larger dilution fans are available upon request.

Indoor Hood Kits



All Raypak pool and spa heaters are built standard for outdoor installation. If the installation location is in a plant room an indoor flue kit is available as an option to convert the standard outdoor model to an indoor model. Heaters installed indoors must never operate in the standard outdoor configuration.

High Wind Top Kits



In some areas where high winds are frequently experienced it may be necessary to install a Raypak High Wind Top. Installation of the High Wind Top will assist proper flueing of the heater and improve operation. High wind tops are available for all models except the Spartan 131, Premium 127 and 167.

Raypak Pool & Spa Heater Price List

Effective February 1, 2011

Part Number	DESCRIPTION	R.R.P.	
		Ex. GST	Inc. GST
Accessories			
REMOTE V2	Remote Thermostat	\$TBA	\$TBA
CAB10	Remote Thermostat Cable 10m	\$TBA	\$TBA
CAB20	Remote Thermostat Cable 20m	\$TBA	\$TBA
CAB50	Remote Thermostat Cable 50m	\$TBA	\$TBA
EIB	Equipment Interface Module	\$TBA	\$TBA
FS-WATTS	Flow Switch Kit – 40/50mm diameter	\$TBA	\$TBA
96501222	PRV – 45psi 0.6 MBTU	\$TBA	\$TBA
96959305	Dilution Fan R6MVAHT (0.18 kW)	\$TBA	\$TBA
96959312	Dilution Fan Adaptor Kit 200	\$TBA	\$TBA
96959313	Dilution Fan Adaptor Kit 280	\$TBA	\$TBA
96959314	Dilution Fan Adaptor Kit 350	\$TBA	\$TBA
96959315	Dilution Fan Adaptor Kit 430	\$TBA	\$TBA
96009203	HWT Kit – Model 200	\$TBA	\$TBA
96009204	HWT Kit – Model 280	\$TBA	\$TBA
96009205	HWT Kit – Model 350	\$TBA	\$TBA
96009206	HWT Kit – Model 430	\$TBA	\$TBA
96009004	Indoor Hood Kit – Model 127	\$TBA	\$TBA
96001682	Indoor Hood Kit – Model 167	\$TBA	\$TBA
96009178	Indoor Hood Kit – Model 200	\$TBA	\$TBA
96009179	Indoor Hood Kit – Model 280	\$TBA	\$TBA
96009180	Indoor Hood Kit – Model 350	\$TBA	\$TBA
96009181	Indoor Hood Kit – Model 430	\$TBA	\$TBA

--	--

Preferred Gas Plumbing & Pool Heating Supplies

For further information regarding product supplies from
Preferred Gas Plumbing & Pool Heating Supplies

Contact us directly

Tel: (07) 5522 0507

Fax: (07) 5593 8980

Warehouse

Unit 1 - 9 Fremantle Street
Burleigh Heads Qld 4220

Postal Address

PO Box 2768

Burleigh B.C. Qld 4220

Email sales@poolheating4u.com.au

